

GENERAL INFORMATION

GI



SECTION GI

CONTENTS

MODEL VARIATION	GI-2	GARAGE JACK AND SAFETY	
IDENTIFICATION NUMBERS	GI-4	STAND	GI-5
ENGINE NUMBER	GI-4	TOWING	GI-5
MANUAL TRANSMISSION NUMBER ..	GI-4	TIE-DOWN	GI-6
AUTOMATIC TRANSMISSION		SPECIAL SERVICE TOOLS	GI-6
NUMBER	GI-4	TIGHTENING TORQUE OF	
LIFTING POINTS AND TOWING	GI-5	STANDARD BOLT	GI-7
PANTOGRAPH JACK	GI-5		

MODEL VARIATION

MODEL VARIATION

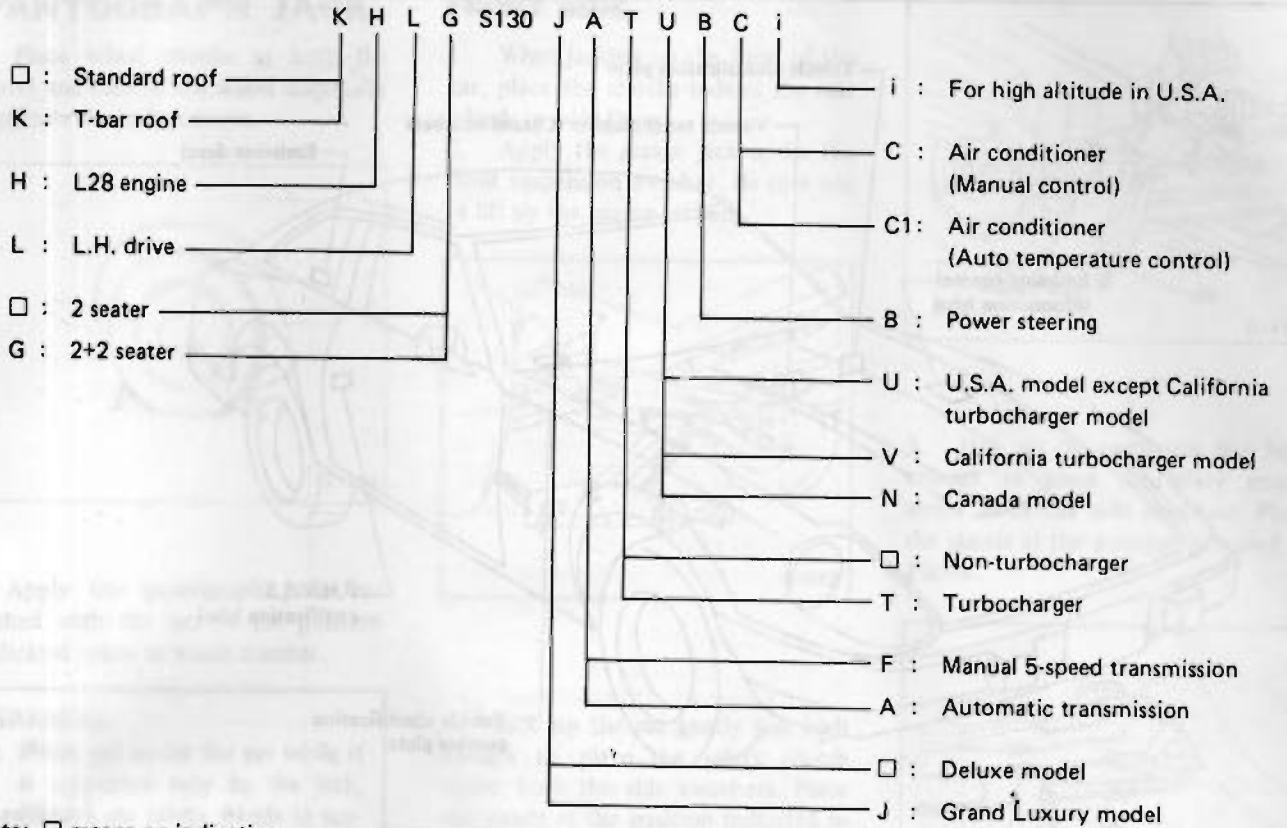
Engine	Destination	Model		Transmission	Differential carrier	Road wheel size ... offset mm (in)	Tire size		
L28E	U.S.A.	2 seater	HLS130FU	FS5W71B	R180	5-1/2JJ-14 ... 15 (0.59)	195/70HR14		
			HLS130JFU		R200				
			HLS130JAU	L3N71B	R180				
			T-bar roof	KHLS130JFU	FS5W71B			R200	
		KHLS130JAU		L3N71B	R180				
		2+2 seater	HLGS130JFU	FS5W71B	R200				
			HLGS130JAU	L3N71B	R180				
			T-bar roof	KHLGS130JFU	FS5W71B		R200		
	KHLGS130JAU			L3N71B	R180				
	Canada	2 seater	HLS130FN	FS5W71B	R180	5-1/2JJ-14 ... 15 (0.59)	195/70HR14		
			KHLS130FN		R200				
			T-bar roof	KHLS130JFN	L3N71B			R180	
				KHLS130JAN	L3N71B			R180	
		2+2 seater	KHLGS130JFN	FS5W71B	R200				
KHLGS130JAN			L3N71B	R180					
L28ET			U.S.A.	Non-California	T-bar roof	KHLS130JTU	FS5R90A*1	6JJ-15*2 10 (0.39)	P205/60R15
						KHLS130JATU	3N71B		
	2+2 seater	KHLGS130JTU				FS5R90A*1			
		KHLGS130JATU				3N71B			
	California	2 seater		KHLS130JTV		FS5R90A*1			
				KHLS130JATV		3N71B			
		2+2 seater		KHLGS130JTV		FS5R90A*1			
				KHLGS130JATV		3N71B			
	Canada	2 seater	KHLS130JTN	FS5R90A*1					
			KHLS130JATN	3N71B					
			2+2 seater	KHLGS130JTN	FS5R90A*1				
		KHLGS130JATN		3N71B					

*1: Borg-Warner T-5 manual transmission

*2: Aluminum wheel (2-piece type)

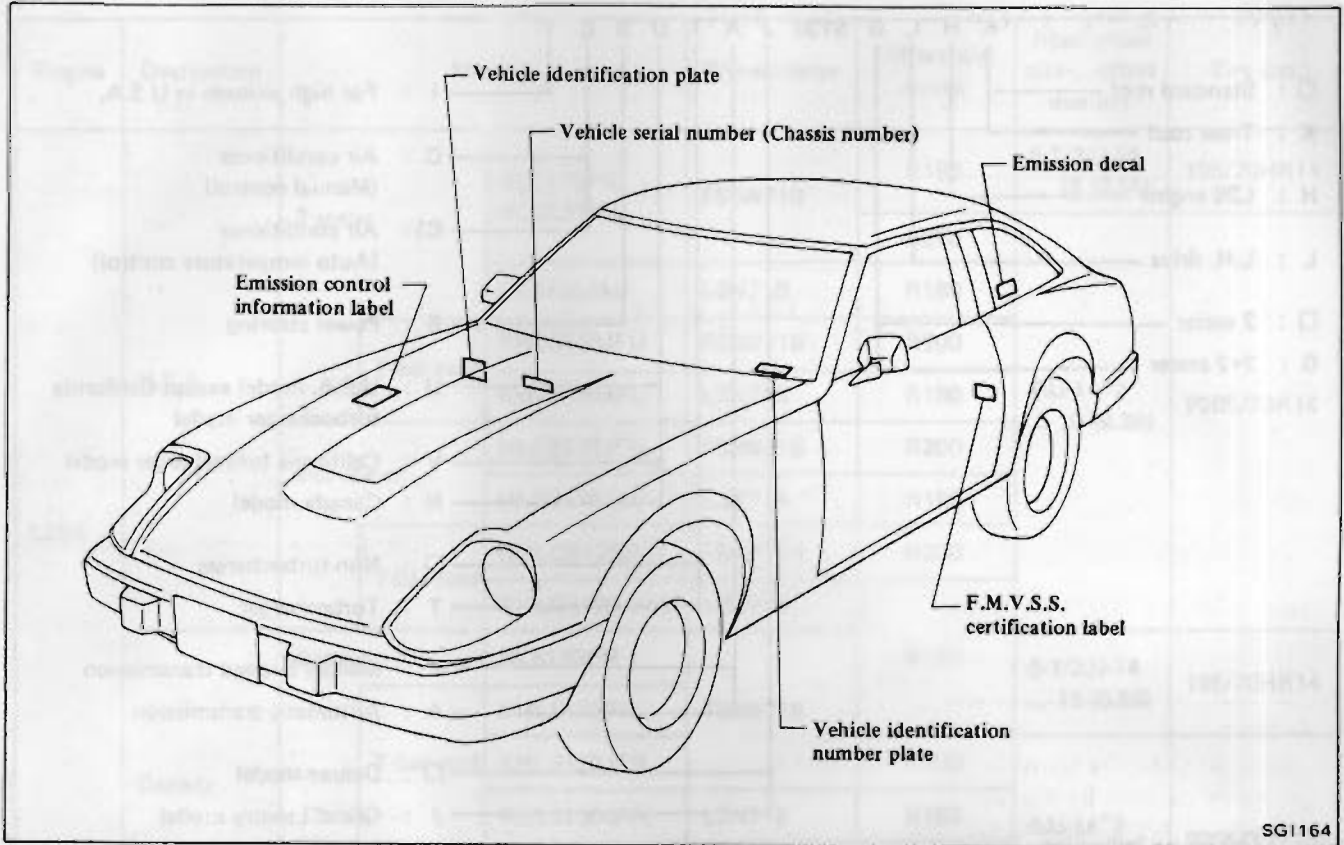
MODEL VARIATION

Prefix and suffix designations



Note: means no indication.

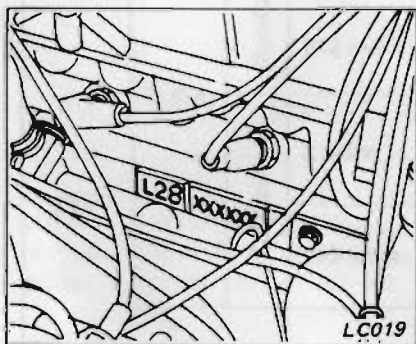
IDENTIFICATION NUMBERS



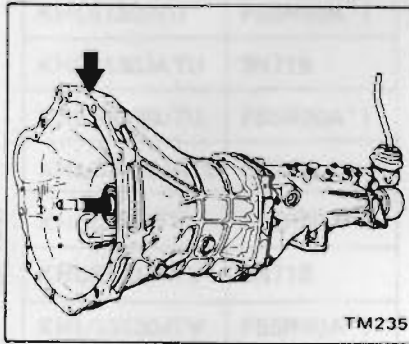
SG1164

ENGINE NUMBER

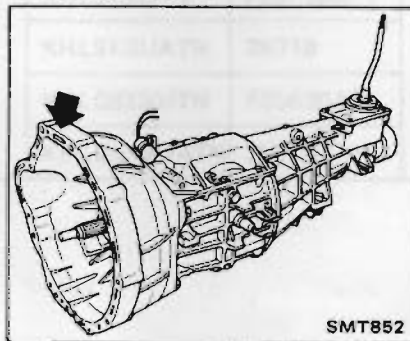
The engine serial number is stamped on the right-hand side of the cylinder block.



FS5W71B for non-turbocharger model

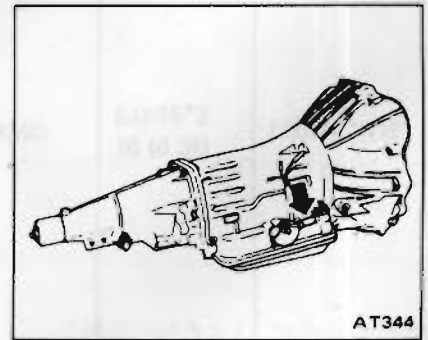


FS5R90A (Borg Warner T-5) for turbocharger model



AUTOMATIC TRANSMISSION NUMBER

The transmission serial number plate is attached to the right-hand side of the transmission case.



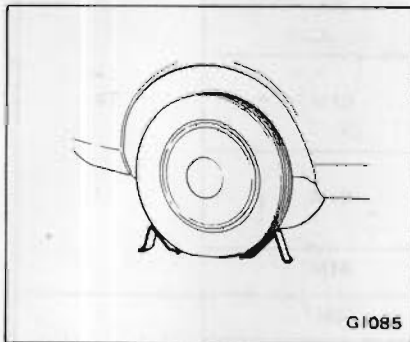
MANUAL TRANSMISSION NUMBER

The transmission serial number is stamped on the upper front face of the transmission case.

LIFTING POINTS AND TOWING

PANTOGRAPH JACK

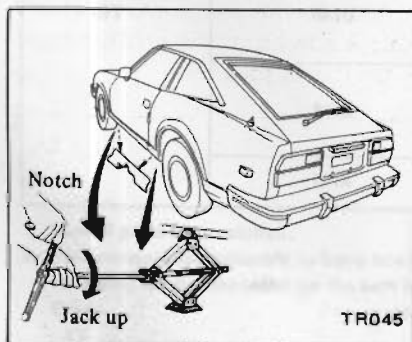
Place wheel chocks at both the front and back of the wheel diagonally opposite the jack position.



Apply the pantograph jack furnished with the car to the position indicated below in a safe manner.

WARNING:

- a. Never get under the car while it is supported only by the jack. Always use safety stands to support frame when you have to get under the car.
- b. Block the wheels diagonally with wheel chocks.



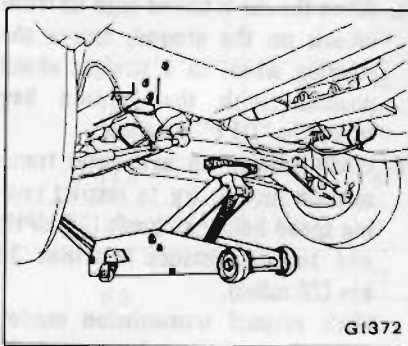
GARAGE JACK AND SAFETY STAND

WARNING:

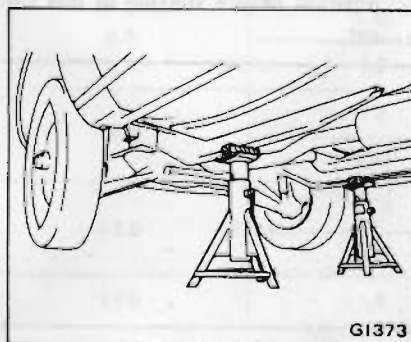
When carrying out operations with the garage jack, be sure to support the car with safety stands.

FRONT SIDE

1. When jacking up the front of the car, place the chocks behind the rear wheels to hold them.
2. Apply the garage jack under the front suspension member. Be sure not to lift up the engine oil pan.



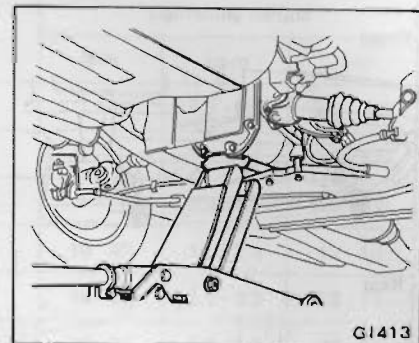
3. Jack up the car gently just high enough to place the safety stands under both the side members. Place the stands at the position indicated in Figure.



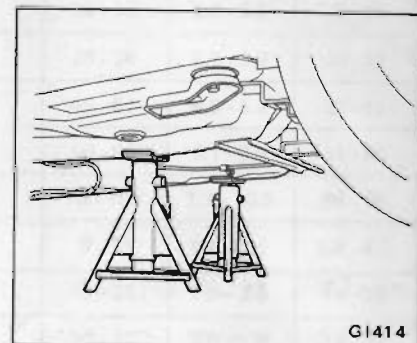
4. Release the jack slowly.

REAR SIDE

1. When jacking up the rear of the car, place the chocks at the front side of the front wheels to hold them.
2. Apply the garage jack under the differential carrier.



3. Jack up the car gently just high enough to place the safety stands under both the side members. Place the stands at the position indicated in Figure.



TOWING

CAUTION:

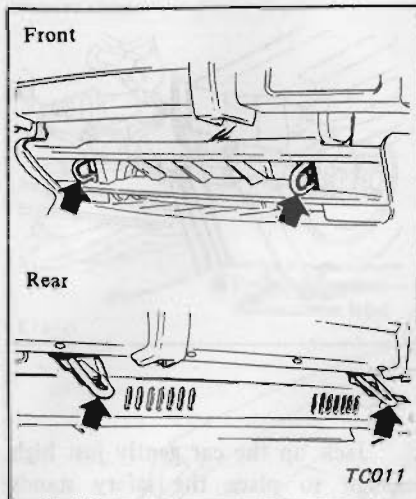
- a. It is necessary to use proper towing equipment, to avoid possible damage to the car during a towing operation. Towing is in accordance with Towing Procedure Manual at dealer side.
- b. All applicable State or Provincial (in Canada) laws and local laws regarding the towing operation must be obeyed.

Front towing hooks are provided on both front side members.

Front tow: Not recommended with conventional sling-type equipment.

SPECIAL SERVICE TOOLS

Rear towing hooks are combined with shock absorber for rear bumper.



CAUTION:

- Before towing, make sure that the transmission, axles, steering system and power train are in good order. If any unit is damaged, a dolly must be used.
- If the transmission is inoperative, tow the car with the rear wheels off the ground, or with the propeller shaft removed.
- When the car is towed with its front wheels on the ground, secure the steering wheel in a straight ahead position with the ignition key turned in "OFF" position.
- When towing an automatic transmission model, try to restrict towing speed below 30 km/h (20 MPH) and towing distance less than 30 km (20 miles).
With manual transmission model, try to restrict towing speed 80 km/h (50 MPH) and towing distance less than 80 km (50 miles).
If the speed or distance must necessarily be greater, remove the propeller shaft beforehand to prevent damage to the transmission.
- Release the parking brake and set the gearshift lever in "Neutral" position before starting to tow the car.

TIE-DOWN

Use front and rear towing hooks for tie-down at front and rear sides.

SPECIAL SERVICE TOOLS

Special Service Tools play very important role in the maintenance of cars. These are essential to the safe, accurate and speedy servicing.

The working times listed in the column under FLAT RATE TIME in FLAT RATE SCHEDULE are com-

puted based on the use of Special Service Tools.

The identification code of maintenance tools is made up of 2 alphabetical letters and 8-digital figures.

The heading two letters roughly classify tools or equipment as:

ST00000000:	Special Service Tool
KV00000000:	Special Service Tool
EM00000000:	Engine Overhauling Machine
GG00000000:	General Gauge
LM00000000:	Garage Tool
HT00000000:	Hand Tool

TIGHTENING TORQUE OF STANDARD BOLT

Grade	Nominal size	Diameter mm	Pitch mm	Tightening torque		
				N·m	kg·m	ft·lb
4T	M6	6.0	1.0	3 - 4	0.3 - 0.4	2.2 - 2.9
	M8	8.0	1.25	8 - 11	0.8 - 1.1	5.8 - 8.0
			1.0	8 - 11	0.8 - 1.1	5.8 - 8.0
	M10	10.0	1.5	16 - 22	1.6 - 2.2	12 - 16
			1.25	16 - 22	1.6 - 2.2	12 - 16
	M12	12.0	1.75	26 - 36	2.7 - 3.7	20 - 27
1.25			30 - 40	3.1 - 4.1	22 - 30	
M14	14.0	1.5	46 - 62	4.7 - 6.3	34 - 46	
7T	M6	6.0	1.0	6 - 7	0.6 - 0.7	4.3 - 5.1
	M8	8.0	1.25	14 - 18	1.4 - 1.8	10 - 13
			1.0	14 - 18	1.4 - 1.8	10 - 13
	M10	10.0	1.5	25 - 35	2.6 - 3.6	19 - 26
			1.25	26 - 36	2.7 - 3.7	20 - 27
	M12	12.0	1.75	45 - 61	4.6 - 6.2	33 - 45
1.25			50 - 68	5.1 - 6.9	37 - 50	
M14	14.0	1.5	76 - 103	7.7 - 10.5	56 - 76	
9T	M6	6.0	1.0	8 - 11	0.8 - 1.1	5.8 - 8.0
	M8	8.0	1.25	19 - 25	1.9 - 2.5	14 - 18
			1.0	20 - 27	2.0 - 2.8	14 - 20
	M10	10.0	1.5	36 - 50	3.7 - 5.1	27 - 37
			1.25	39 - 51	4.0 - 5.2	29 - 38
	M12	12.0	1.75	65 - 88	6.6 - 9.0	48 - 65
1.25			72 - 97	7.3 - 9.9	53 - 72	
M14	14.0	1.5	109 - 147	11.1 - 15.0	80 - 108	

1. Special parts are excluded.
2. This standard is applicable to bolts having the following marks embossed on the bolt head.

Grade	Mark
4T	4
7T	7
9T	9